

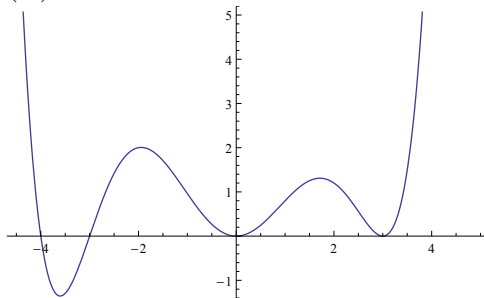
**Part I (due at the beginning of class Thursday, December 4)**

Try problems 6–9 on the Integrals handout.

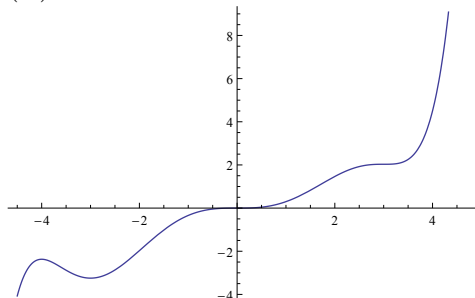
**Part II: Problems (due at the beginning of class Tuesday, December 9)**

1. Of the functions in the two graphs below, which is an antiderivative of the other? Explain your answer.

(A)



(B)



2. Use the definition of the definite integral to evaluate the following definite integrals (i.e., write the definite integral as a limit of a Riemann sum and then evaluate the limit). The formulas given in the reading for Daily Work 23 Part I will be useful here!

(a)  $\int_1^3 2x^2 dx$

(b)  $\int_{-1}^2 (5x - 1) dx$